

## Fabulous Two Bedroom Condo In The Heart Of Center City



\$ 385,000



111 S 15th St #2111, Philadelphia, PA 19102

- » Beds: 2 | Baths: 2 Full
- » MLS #: PAPH2107310
- » Condominium | 1,184 ft<sup>2</sup>
- » Hardwood flooring throughout
- » Northern and Eastern Sunlight
- » More Info: [PackardGrande2111.com](http://PackardGrande2111.com)

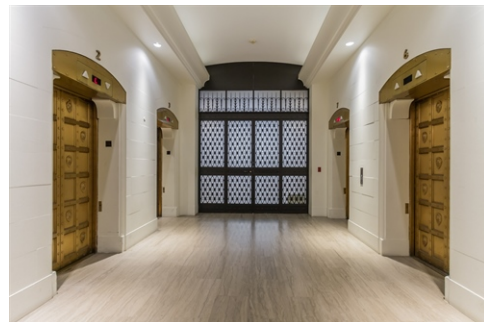


**Eric Fox**  
(267) 625-4504 (Eric Cell)  
[eric@efoxhomes.com](mailto:eric@efoxhomes.com)  
<http://www.efoxhomes.com>



THE ERIC FOX TEAM

Compass  
1430 Walnut Street  
3rd Floor  
Philadelphia, PA 19102  
(267) 435-8015



Located at the Packard Grande in the heart of Center City, this spacious 2 bedroom, 2 bath condo is wide open and amazingly bright with both Northern and Eastern light exposures. The living room and dining area features hardwood floors and recessed lighting. The open kitchen features stylish wood cabinetry, granite counters, subway tile backsplash, stainless steel appliances and tile flooring. A convenient breakfast bar separates the kitchen from the living space with double-sided overhead cabinets. The primary suite features a large Northern facing window, 2 closets and an en-suite bath with large vanity, mirror and granite countertop with subway tiled shower/tub. The separate and spacious second bedroom also features two closets, an Eastern facing window, and has custom, built in storage including a desk, bookshelves and additional wardrobe space. In the hallway is the laundry closet along with a both convenient coat and linen closet. The common 3 piece subway tiled bath with full vanity and neutral shower/tub complete the space. The Packard Grande's amenities include a doorman, fitness center, shared lounge and conference space and the most amazing roof-deck with fabulous city views! All this and it's located just steps away from City Hall and all that Center City has to offer! 2 month capital contribution due upon settlement. Center City District charges \$400 per annum. Special assessment of \$228.74. \$400 move

